



The 23rd Samui REGATTA



Co-Sponsors



Local Supporters



Supporting Authorities



Media Partners



23rd - 30th May 2026

Chaweng Beach, Koh Samui, Thailand

การแข่งขันเรือใบนานาชาติ สมุย รีกัตต้า ครั้งที่ 23
ระหว่าง วันที่ 23 - 30 พฤษภาคม 2569 หาดเจง เกาะสมุย

Co-Sponsors



Local Supporters



Supporting Authorities



Media Partners



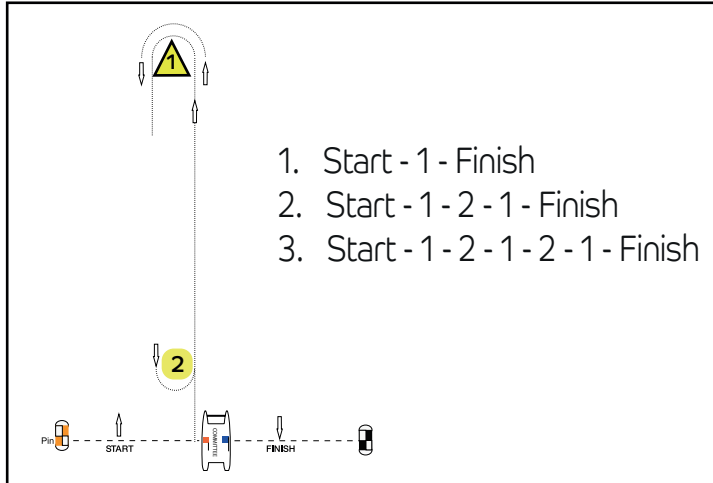
facebook.com/samuiregatta

WWW.SAMUIREGATTA.COM



Courses 1 - 3 (Windward/Leeward)

All marks rounded to port



1. Start - 1 - Finish
2. Start - 1 - 2 - 1 - Finish
3. Start - 1 - 2 - 1 - 2 - 1 - Finish

South Courses:

NOTE: See SI 8.10 Adding a Windward Mark
See SI 9.5 for Description of the Hin Ang Wan Gate

Course 10

Start
Round Hin Ang Wang to Port
Pass Through Gate (Cardinal Mark to Port)
Finish

Course 11

Start
Round Mark 4 (Lamai) to Port
Round Hin Ang Wang to Port
Pass Through Gate (Cardinal Mark to Port)
Finish

Course 12

Start
Round W/L Mark 1 to Port
Round Hin Ang Wang to Port
Pass Through Gate (Cardinal Mark to Port)
Round W/L Mark 1 to Port
Finish

Course 12B

Start
Round Hin Ang Wang to Port
Pass Through Gate (Cardinal Mark to Port)
Round Mark 4 (Lamai) to Starboard
Round W/L Mark 1 to Port
Finish

North Courses:

NOTE SI 8.10 Adding a Windward Mark

Course 4

Start
Round Ko Kong OK Group to Port
Finish

Course 5

Start
Pass Ko Kong OK (Group) to Port
Round Had Rin (Inflatable) Buoy to Port
Pass Ko Kong OK to Port
Finish

Course 6

Start
Pass Ko Kong OK (Group) to Port
Round Had Rin (Inflatable) Buoy to Port
Round Menam (Inflatable) Buoy to Port
Round Ko Kong OK (Group) to Starboard
Finish

Course 7

Start
Pass Ko Kong OK (Group) to Port
Round Ko Tae (Safe Water) Mark to Port
Round Ko Kong OK (Group) to Starboard
Finish

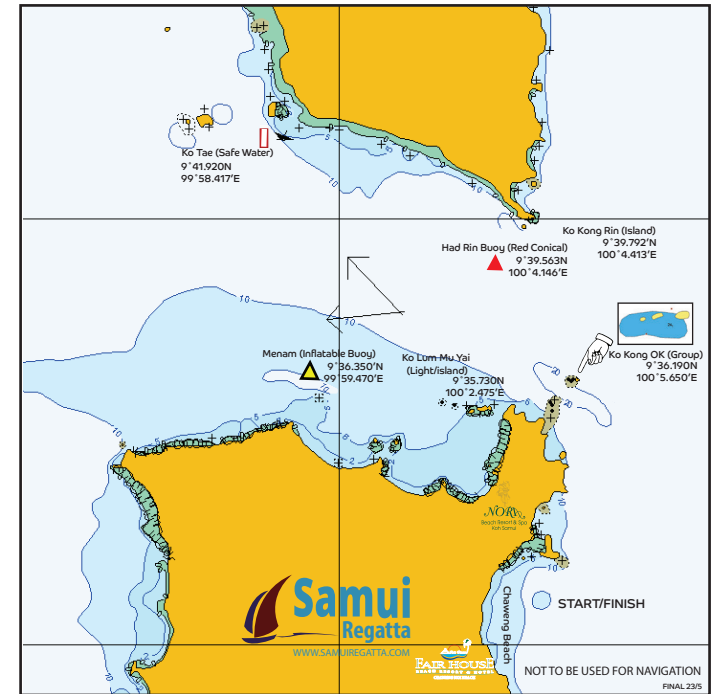
Course 8

Start
Pass Ko Kong OK (Group) to Port
Round Ko Tae (Safe Water) Mark to Port
Round Menam (Inflatable) Buoy to Port
Round Ko Kong OK (Group) to Starboard
Finish

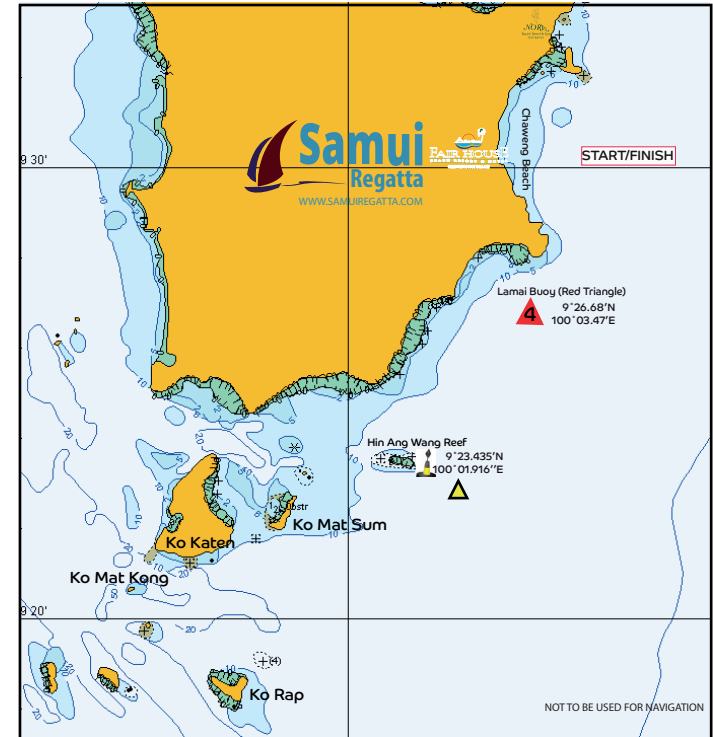
Course 9

Pass Ko Kong OK (Group) to Port
Round Ko Tae (Safe Water) Mark to Port
Round Had Rin (Inflatable) Buoy to Starboard
Pass Ko Kong OK to Starboard
Finish

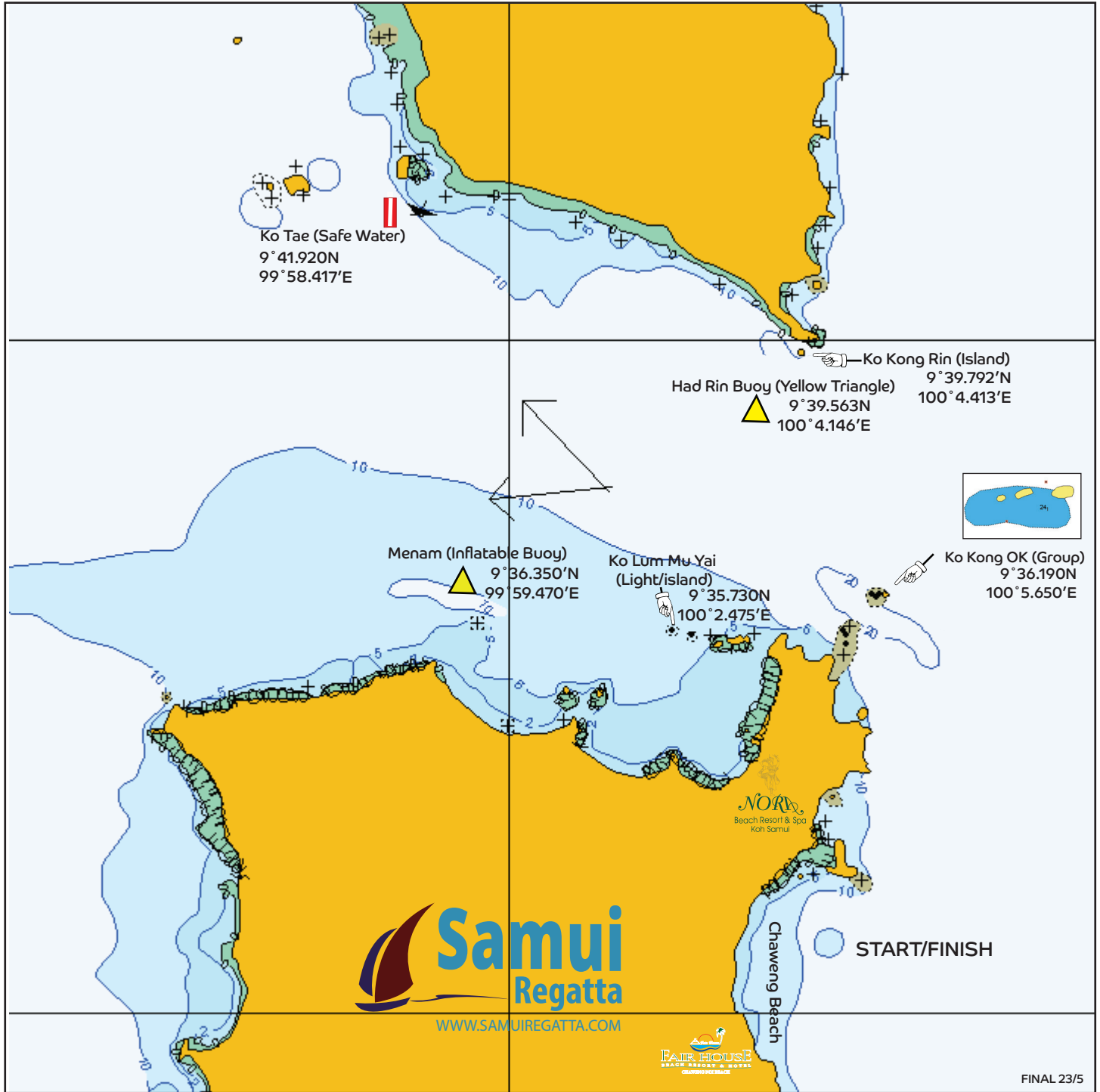
Samui Regatta 2026
Mark Positions - North



Samui Regatta 2026
South Course Mark Positions



Samui Regatta 2026
Mark Positions - North

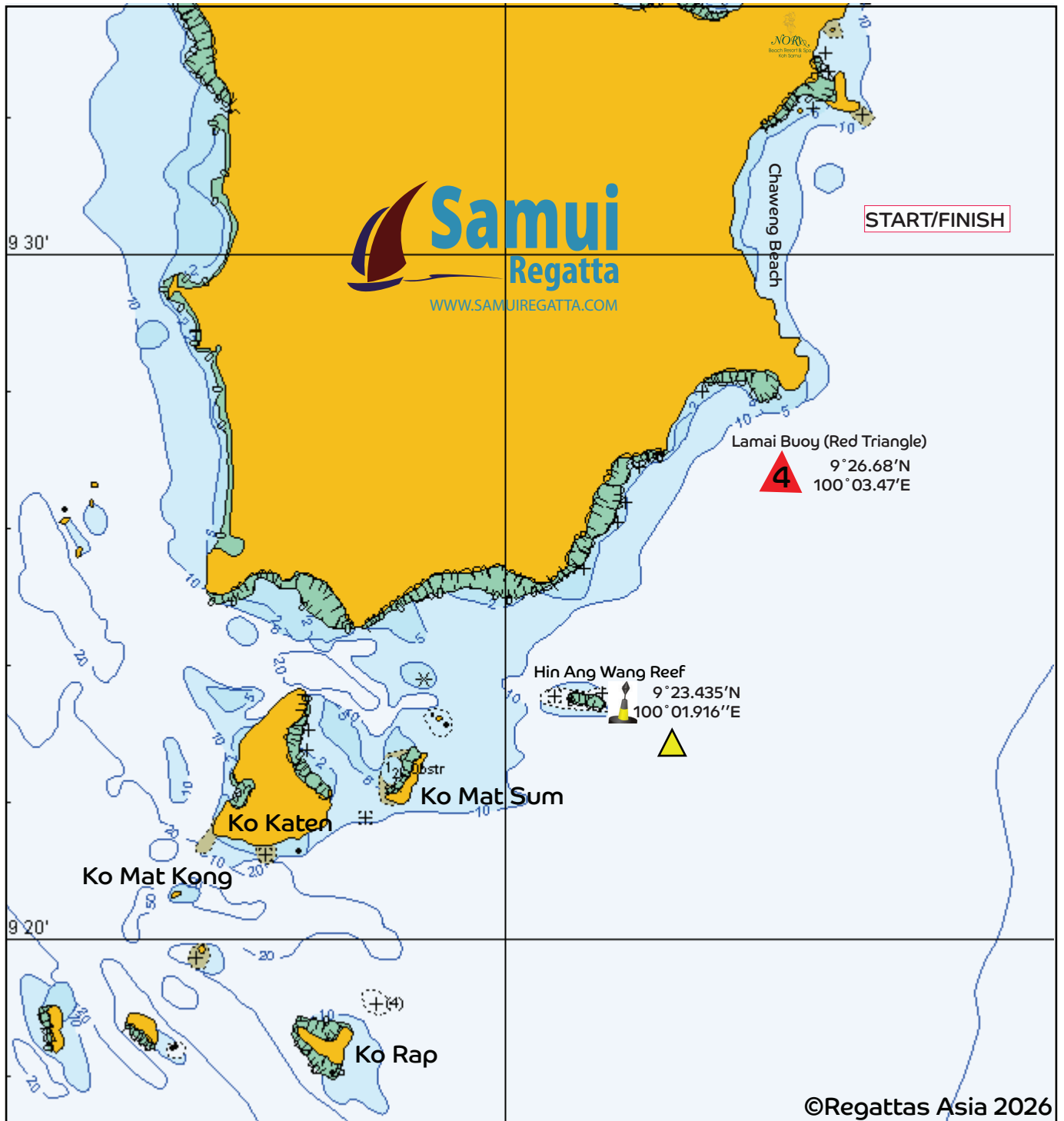


Coastal Courses
Mark Positions - North

REGATTA HQ	9° 31.11'N	100° 03.58'E
Ko Kong Rin Island	9° 39.792'N	100° 04.413'E
Had Rin Buoy (Yellow)	9° 39.563'N	100° 04.146'E
Menam Mark	9° 36.350'N	99° 59.470'E
Ko Tae (Safe Water Mark)	9° 41.902'N	99° 58.417'E
Ko Lum Mu Yai (Outer Light)	9° 35.730'N	100° 02.475'E
Ko Kong OK Group (Outer Island)	9° 36.190'N	100° 05.650'E

Mark positions shown in the course diagrams are for illustration only.
If there is any discrepancy between a course diagram and the written description, then the written description shall prevail.

Samui Regatta 2026
South Course Mark Positions



Coastal Courses
Mark Positions - South

MARK 4 - LAMAI

9° 26.68'N 100° 03.47'E

HIN ANG WANG REEF

REEF EXTENDS at N9° 23.57 between
100° 00.50'E and 100° 01.80 E
YACHTS SHALL NOT PASS BETWEEN HIN ANG WANG REEF
AND THE EAST CARDINAL MARK

HIN ANG WANG (Cardinal Mark)

9° 23.435'N 100° 01.916'E

Mark positions shown in the course diagrams are for illustration only.
If there is any discrepancy between a course diagram and the written description,
then the written description shall prevail.